

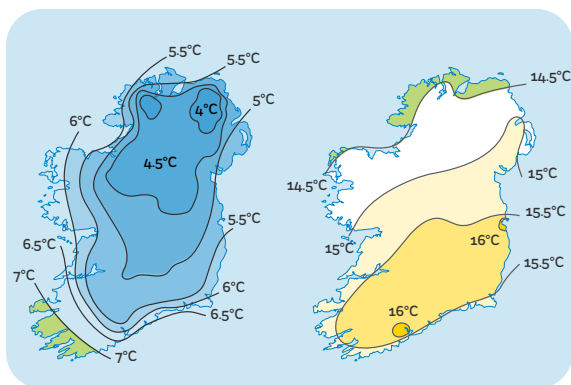
Lesson 1

Synoptic Charts: Mapping Weather Data

Select the correct term from:

ISOHELs, ISOHYETS, ISOTHERMS, ISOBARS

1



Lines on a weather map connecting places of equal temperature are called:

Answer:

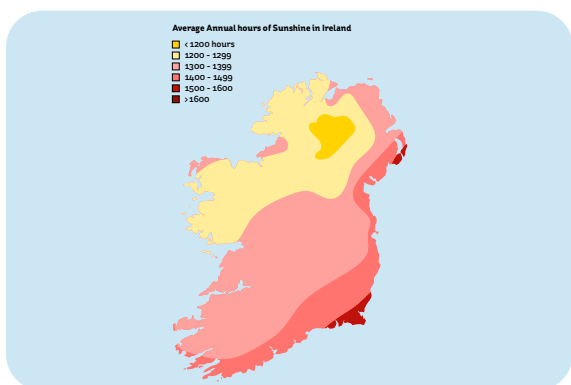
2



Lines on a weather map connecting points of equal air pressure are called:

Answer:

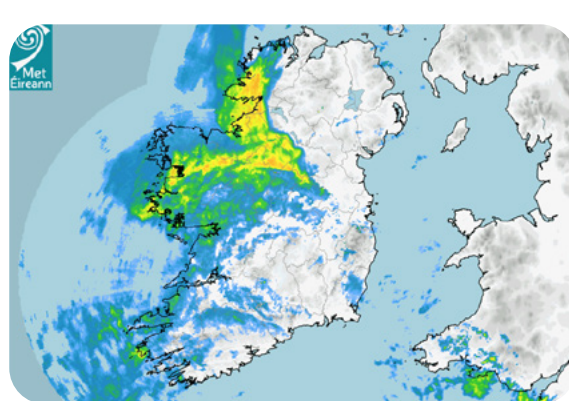
3



Lines on a weather map connecting places of equal sunshine hours are called:

Answer:

4



Lines on a weather map connecting places of equal rainfall are called:

Answer: